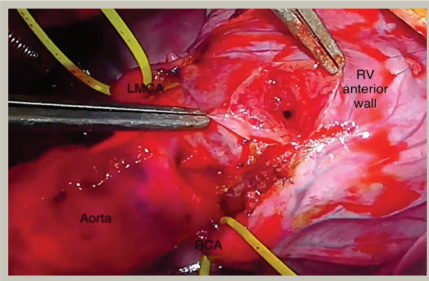


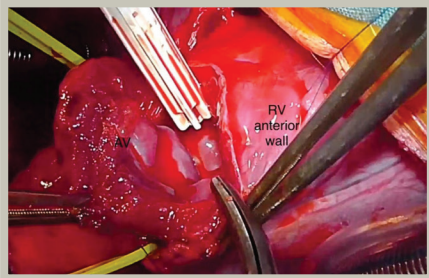


# CSMJ

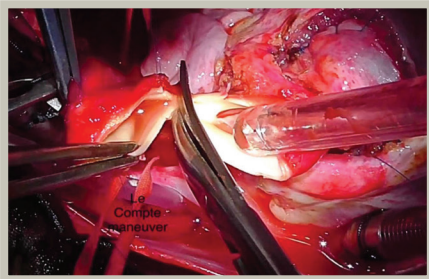
THE JOURNAL OF BAŞAKŞEHİR ÇAM AND SAKURA CITY HOSPITAL



**Figure 1.** Proximal RCA and LMCA are released in the beating heart  
LMCA: Left main coronary artery, RCA: Right coronary artery, RV: Right ventricle



**Figure 2.** A curvilinear incision in the anterior wall of the RV was created to visualize the aortic valve  
AV: Aortic valve, RV: Right ventricle



**Figure 5.** The aorta was transected for the Le Compte maneuver



C  
A  
M  
&  
S  
A  
K  
U  
R  
A

M  
E  
D  
I  
C  
A  
L  
  
J  
O  
U  
R  
N  
A  
L



December

2022

Volume: 2 Issue: 3

## EDITOR IN CHIEF

**Merih Çetinkaya**

Department of Neonatology, University of Health Sciences, Turkey, Başakşehir Çam & Sakura City Hospital, İstanbul, Turkey

drmerih@yahoo.com

ORCID ID: 0000-0002-7344-8637

## EDITORIAL SECRETARY

**Kamuran Ziyaretli Şanlı**

Department of Microbiology and Clinical Microbiology, University of Health Sciences, Turkey, Başakşehir Çam & Sakura City Hospital, İstanbul, Turkey

kamuran67@gmail.com

ORCID ID: 0000-0003-0814-5637

## DEPUTY EDITORS

**Nevra Dursun Kepkep**

Department of Pathology, University of Health Sciences, Turkey, Başakşehir Çam & Sakura City Hospital, İstanbul, Turkey

durnevra@gmail.com

ORCID ID: 0000-0001-8076-7911

**Ahmet Güler**

Department of Cardiology, University of Health Sciences, Turkey, Başakşehir Çam & Sakura City Hospital, İstanbul, Turkey

ahmetguler01@yahoo.com.tr

ORCID ID: 0000-0002-0963-9658

**Alper Gümüş**

Department of Biochemistry, University of Health Sciences, Turkey, Başakşehir Çam & Sakura City Hospital, İstanbul, Turkey

dralpergumus@gmail.com

ORCID ID: 0000-0002-4453-6339

**Ömür Günaldı**

Department of Neurosurgery, University of Health Sciences, Turkey, Başakşehir Çam & Sakura City Hospital, İstanbul, Turkey

omurgunalı@gmail.com

ORCID ID: 0000-0001-5071-1319

**Ramazan Güven**

Department of Emergency Medicine, University of Health Sciences, Turkey, Başakşehir Çam & Sakura City Hospital, İstanbul, Turkey

drmazanguven@gmail.com

ORCID ID: 0000-0003-4129-8985

**Esra Şüheda Hatipoğlu**

Department of Endocrinology and Metabolism, University of Health Sciences, Turkey, Başakşehir Çam & Sakura City Hospital, İstanbul, Turkey

esuheda@yahoo.com

ORCID ID: 0000-0001-8361-8866

**Didem Karaçetin**

Department of Radiation Oncology, University of Health Sciences, Turkey, Başakşehir Çam & Sakura City Hospital, İstanbul, Turkey

didemkaraçetin@gmail.com

ORCID ID: 0000-0001-5359-5958

**Özgür Kılıçkesmez**

Department of Radiology, University of Health Sciences, Turkey, Başakşehir Çam & Sakura City Hospital, İstanbul, Turkey

okilickesmez@yahoo.com

ORCID ID: 0000-0003-4658-2192

**Nilüfer Çetinkaya Kocadal**

Department of Gynecology and Gynecologic Oncology, University of Health Sciences, Turkey, Başakşehir Çam & Sakura City Hospital, İstanbul, Turkey

cetinkayanilufer@gmail.com

ORCID ID: 0000-0001-9183-3558

**İlgin Özden**

Department of Hepatopancreatobiliary Surgery and Liver Transplantation, Başakşehir Çam & Sakura City Hospital, İstanbul, Turkey

iozden@hotmail.com

ORCID ID: 0000-0001-7360-628X

**Serkan Sarı**

Department of General Surgery, University of Health Sciences, Turkey, Başakşehir Çam & Sakura City Hospital, İstanbul, Turkey

drserkansari@yahoo.com

ORCID ID: 0000-0003-2918-1776

**Bekir Tuğcu**

Department of Neurosurgery, University of Health Sciences, Turkey, Başakşehir Çam & Sakura City Hospital, İstanbul, Turkey

tugcubekir@gmail.com

ORCID ID: 0000-0003-0385-0054

**Burçak Yılmaz**

Department of Nuclear Medicine, University of Health Sciences, Turkey, Başakşehir Çam & Sakura City Hospital, İstanbul, Turkey

drburcak@gmail.com

ORCID ID: 0000-0002-6979-0990

## Editorial Board

## ASSOCIATE EDITORS

**Soyhan Bağcı**

Department of Neonatology and Pediatric Intensive Care, Children's Hospital, University of Bonn, Bonn, Germany  
Soyhan.bagci@ukbonn.de  
ORCID ID: 0000-0003-1005-665X

**Fuat Emre Canpolat**

Department of Pediatrics, Division of Neonatology, University of Health Sciences, Turkey, Ankara City Hospital, Ankara, Turkey  
femrecan@gmail.com  
ORCID ID: 0000-0001-9307-3003

**Ali İhsan Dokucu**

Department of Pediatric Surgery, University of Health Sciences, Turkey, Prof. Dr. Cemil Taşcıoğlu City Hospital, İstanbul, Turkey  
aidokucu@gmail.com  
ORCID ID: 0000-0002-1162-5140

**Birsen Gökyiğit**

Department of Ophtalmology, Yenyüzyıl University, İstanbul, Turkey  
bgokyigit@hotmail.com  
ORCID ID: 0000-0002-4154-4106

**Ayşe Esra Karakoç**

Department of Medical Microbiology, Ankara Training and Research Hospital, Ankara, Turkey  
aesrakarakoc@gmail.com  
ORCID ID: 0000-0001-6332-1109

**Meral Günaldı**

Department of Medical Oncology, Aydın University, Faculty of Medicine, İstanbul, Turkey  
meralgunaldi@gmail.com  
ORCID ID: 0000-0002-5496-9824

**Yıldız Okuturlar**

Department of Internal Medicine, Acıbadem University, Faculty of Medicine, Acıbadem Atakent Hospital, İstanbul, Turkey  
y.okuturlar@gmail.com  
ORCID ID: 0000-0002-1994-0014

## STATISTICS EDITORS

**Ali Ayçiçek**

Department of Pediatric Hematology, University of Health Sciences, Turkey, Başakşehir Çam & Sakura City Hospital, İstanbul, Turkey  
ayciceka@hotmail.com  
ORCID ID: 0000-0001-8951-4750

**Erkut Öztürk**

Department of Pediatric Cardiology, University of Health Sciences, Turkey, Başakşehir Çam & Sakura City Hospital, İstanbul, Turkey  
erkut\_ozturk@yahoo.com  
ORCID ID: 0000-0002-1762-3269

## LANGUAGE EDITOR

**Banu Arslan**

Department of Emergency Medicine, University of Health Sciences, Turkey, Başakşehir Çam & Sakura City Hospital, İstanbul, Turkey  
mail: dr.banuarslan@gmail.com  
ORCID ID: 0000-0003-0982-5351

**English Editing**

ENAGO / New York, United States

## PERSPECTIVE &amp; IMAGES EDITOR

**Aytül Hande Yardımcı**

Department of Radiology, University of Health Sciences, Turkey, Başakşehir Çam & Sakura City Hospital, İstanbul, Turkey  
mail: yahandeoo@yahoo.com  
ORCID ID: 0000-0002-5163-9141

**Anesthesiology and Reanimation**

**Section Editor:** Funda Gümüş Özcan, University of Health Sciences, Turkey, Başakşehir Çam & Sakura City Hospital, İstanbul, Turkey

Onur Demirci, Mayo Clinic, Minnesota, United States

Antigona Hasani, University of Pristina, Faculty of Medicine, Pristina, Kosovo

Dilek Kazancı, Ankara City Hospital, Ankara, Turkey

Tülin Öztürk, Celal Bayar University, Faculty of Medicine, Manisa, Turkey

Kemal Tolga Saraçoğlu, Kartal Dr. Lütfi Kırdar City Hospital, İstanbul, Turkey

Fevzi Toraman, Acıbadem Mehmet Ali Aydınlar University, Faculty of Medicine, İstanbul, Turkey

**Biochemistry**

Murat Can, Bülent Ecevit University, Faculty of Medicine, Zonguldak, Turkey

Mevlüt Sait Keleş, Üsküdar University, Faculty of Medicine, İstanbul, Turkey

İlhan Yaylım, İstanbul University, İstanbul Faculty of Medicine, İstanbul, Turkey

**Cardiology**

Taylan Akgün, University of Health Sciences, Turkey, Başakşehir Çam & Sakura City Hospital, İstanbul, Turkey

Abdullah Orhan Demirtaş, Adana City Hospital, Adana, Turkey

Ali Kemal Kalkan, Mehmet Akif Ersoy Thoracic and Cardiovascular Surgery Training and Research Hospital, İstanbul, Turkey

Can Yücel Karabay, Dr. Siyami Ersek Thoracic and Cardiovascular Surgery Training and Research Hospital, İstanbul, Turkey

Alev Kılıçgedik, Kartal Koşuyolu Cardiovascular Research and Training Hospital, İstanbul, Turkey

**Cardiovascular Surgery**

**Section Editor:** Nihan Kayalar, University of Health Sciences, Turkey, Başakşehir Çam & Sakura City Hospital, İstanbul, Turkey

Suat Nail Ömeroğlu, İstanbul University, Cerrahpaşa Faculty of Medicine, İstanbul, Turkey

Sameh Said, University of Minnesota, Faculty of Medicine, Minneapolis, United States

Mehmed Yanartaş, University of Health Sciences, Turkey, Başakşehir Çam & Sakura City Hospital, İstanbul, Turkey

Süleyman Yazıcı, University of Health Sciences, Turkey, Başakşehir Çam & Sakura City Hospital, İstanbul, Turkey

**Chest Disease**

**Section Editor:** Mehmet Akif Özgül, University of Health Sciences, Turkey, Başakşehir Çam & Sakura City Hospital, İstanbul, Turkey

Gamze Kırkıl, Fırat University, Faculty of Medicine, Elazığ, Turkey

Ekrem Cengiz Seyhan, Yedikule Chest Diseases and Thoracic Surgery Training and Research Hospital, İstanbul, Turkey

Mehmet Atilla Uysal, Yedikule Chest Diseases and Thoracic Surgery Training and Research Hospital, İstanbul, Turkey

Sibel Yurt, University of Health Sciences, Turkey, Başakşehir Çam & Sakura City Hospital, İstanbul, Turkey

**Critical Care Medicine**

**Section Editor:** Güldem Turan, University of Health Sciences, Turkey, Başakşehir Çam & Sakura City Hospital, İstanbul, Turkey

Işıl Özkoçak, Ankara City Hospital, Ankara, Turkey

Nimet Şenoğlu, Tepecik Training and Research Hospital, İzmir, Turkey

Namigar Turgut, University of Health Sciences, Turkey, Prof. Dr. Cemil Taşcıoğlu City Hospital, İstanbul, Turkey

Tuğhan Utku, Yeditepe University, Faculty of Medicine, İstanbul, Turkey

**Dermatology**

**Section Editor:** Zafer Türkoğlu, University of Health Sciences, Turkey, Başakşehir Çam & Sakura City Hospital, İstanbul, Turkey

Didem Didar Balci, Tepecik Training and Research Hospital, İzmir, Turkey

Burce Can, Sultan Abdulhamid Han Training and Research Hospital, İstanbul, Turkey

Filiz Topaloğlu Demir, Medipol University, Faculty of Medicine, İstanbul, Turkey

İlkin Zindancı, Ümraniye Training and Research Hospital, İstanbul, Turkey

**Emergency Medicine**

Ayhan Aköz, Adnan Menderes University, Faculty of Medicine, Aydın, Turkey

Burcu Genç Yavuz, Haydarpaşa Numune Training and Research Hospital, İstanbul, Turkey

Mücahit Kapçı, University of Health Sciences, Turkey, Başakşehir Çam & Sakura City Hospital, İstanbul, Turkey

Özgür Söğüt, University of Health Sciences, Turkey, Haseki Training and Research Hospital, İstanbul, Turkey

Shikha Tandon, Fortis Hospital, New Delhi, India

İsmail Tayfur, İlhan Varank Training and Research Hospital, İstanbul, Turkey

**Endocrinology and Metabolism**

Sema Çiftçi, University of Health Sciences, Turkey, Bakırköy Dr. Sadi Konuk Training and Research Hospital, İstanbul, Turkey

Mahmut Muzaffer İlhan, Medipol Çamlıca Hospital, İstanbul, Turkey

Hakan Korkmaz, Süleyman Demirel University, Faculty of Medicine, Isparta, Turkey



## Editorial Board

Meral Mert, University of Health Sciences, Turkey, Bakırköy Dr. Sadi Konuk Training and Research Hospital, İstanbul, Turkey

Mutlu Niyazoğlu, University of Health Sciences, Turkey, Başakşehir Çam & Sakura City Hospital, İstanbul, Turkey

## Family Medicine

**Section Editor:** Hilal Özkaya, University of Health Sciences, Turkey, Başakşehir Çam & Sakura City Hospital, İstanbul, Turkey

Seçil Güner Arıca, University of Health Sciences, Turkey, Prof. Dr. Cemil Taşcıoğlu City Hospital, İstanbul, Turkey

Kamile Marakoğlu, Selçuk University, Faculty of Medicine, Konya, Turkey

Mehmet Özen, Antalya Training and Research Hospital, Antalya, Turkey

## General Surgery

**Section Editor of Surgical Oncology:** Soykan Arıkan, University of Health Sciences, Turkey, Başakşehir Çam & Sakura City Hospital, İstanbul, Turkey

**Section Editor of Gastrointestinal Surgery:** Kıvanç Derya Peker, University of Health Sciences, Turkey, Başakşehir Çam & Sakura City Hospital, İstanbul, Turkey

**Section Editor of General Surgery:** Hasan Bektaş, University of Health Sciences, Turkey, Başakşehir Çam & Sakura City Hospital, İstanbul, Turkey

Orhan Ağcaoğlu, Koç University, Faculty of Medicine, İstanbul, Turkey

Halil Alış, Aydın University, Faculty of Medicine, İstanbul, Turkey

Ali Orhan Bilge, Koç University, Faculty of Medicine, İstanbul, Turkey

Erdal Birol Bostancı, Ankara City, Hospital, Ankara, Turkey

Güralp Onur Ceyhan, Mehmet Ali Aydınlar Acıbadem University, Faculty of Medicine, İstanbul, Turkey

Abdul Cem İbiş, İstanbul University, Faculty of Medicine, İstanbul, Turkey

Timuçin Taner, Mayo Clinic, Minnesota, United States

## Gynecologic Oncology

Onur Güralp, Carl von Ossietzky Oldenburg University, Oldenburg, Germany

Mustafa Zelal Muallem, Charite Universitätsmedizin, Berlin, Germany

Murat Öz, Ankara City Hospital, Turkey

İbrahim Yalçın, Ondokuz Mayıs University, Faculty of Medicine, Samsun, Turkey

## Hematology

**Section Editor:** Mesut Ayer, University of Health Sciences, Turkey, Başakşehir Çam & Sakura City Hospital, İstanbul, Turkey

Güven Çetin, Bezmialem University Faculty of Medicine, İstanbul, Turkey

Sinan Dal, Abdurrahman Yurtarslan Ankara Oncology Hospital, Ankara, Turkey

Şebnem İzmir Güner, Gelişim University, Memorial Hospital, İstanbul, Turkey

## Hepatobiliary Surgery and Liver Transplantation

Bülent Aydın, Akdeniz University, Faculty of Medicine, Antalya, Turkey

Gürkan Öztürk, Atatürk University, Faculty of Medicine, Erzurum, Turkey

Acar Tüzüner, Ankara University, Faculty of Medicine, Ankara, Turkey

Sezai Yılmaz, İnönü University, Faculty of Medicine, Malatya, Turkey

## Infectious Disease and Microbiology

**Section Editor:** Özlem Altuntaş Aydın, University of Health Sciences, Turkey, Başakşehir Çam & Sakura City Hospital, İstanbul, Turkey

Fatma Gümüşer, Sütçü İmam University, Faculty of Medicine, Kahramanmaraş, Turkey

Hayat Kumbasar Karaosmanoğlu, Bakırköy Dr. Sadi Konuk Training and Research Hospital, İstanbul, Turkey

Meliha Meriç Koç, Bezmialem University, Faculty of Medicine, İstanbul, Turkey

Behice Kurtaran, Çukurova University, Faculty of Medicine, Adana, Turkey

## Internal Medicine

**Section Editor:** Zeynep Karaali, University of Health Sciences, Turkey, Başakşehir Çam & Sakura City Hospital, İstanbul, Turkey

Esra Ataoğlu, Sağlık Bilimleri Haseki Training and Research Hospital, İstanbul, Turkey

Sema Basat, Ümraniye Training and Research Hospital, İstanbul, Turkey

Banu Büyüç, Kartal Lütfi Kırdar City Hospital, İstanbul, Turkey

Alma Idrizi, UHC Mother Teresa, Tirana, Albania

Tayyibe Saler, Adana City Hospital, Adana, Turkey

## Medical Biology

Çiğdem Kekik, İstanbul University, Faculty of Medicine, İstanbul, Turkey

Fatma Oğuz Sarvan, İstanbul University, Faculty of Medicine, İstanbul, Turkey

## Medical Microbiology

Sebahat Aksaray, Haydarpaşa Numune Training and Research Hospital, İstanbul, Turkey

Nuran Karabulut, University of Health Sciences, Turkey, Başakşehir Çam & Sakura City Hospital, İstanbul, Turkey

İpek Kurtböke, University of Sunshine Coast, Sunshine Coast, Australia

Bekir Sami Kocazeybek, İstanbul University, Cerrahpaşa Faculty of Medicine, İstanbul, Turkey

Rıza Adaleti, İstanbul Haydarpaşa Numune Training and Research Hospital, İstanbul, Turkey

Berrin Uzun, Tepecik Training and Research Hospital, İzmir, Turkey

Onur Karatuna, EUCAST Development laboratory (EDL), Växjö, Sweden

### Medical Oncology

Gökmen Umut Erdem, İstanbul University, Cerrahpaşa Faculty of Medicine, İstanbul, Turkey

Ahmet Taner Sümbül, Başkent University, Faculty of Medicine, Adana Turkey

Emre Yıldırım, Kartal Dr. Lütfi Kırdar City Hospital, İstanbul, Turkey

### Neonatology

Melek Akar, Tepecik Training and Research Hospital, İzmir, Turkey

Ahmet Yağmur Baş, Etlik Zübeyde Hanım Women's Health Care, Training and Research Hospital, Ankara, Turkey

Yekta Öncel, İzmir Katip Çelebi University, Faculty of Medicine, İzmir, Turkey

Senem Alkan Özdemir, İzmir Dr. Behçet Uz Children's Hospital, İzmir, Turkey

Hasan Sinan Uslu, Şişli Hamidiye Etfal Training and Research Hospital, İstanbul Turkey

### Nephrology

Rümeza Kazancıoğlu, Bezmialem University, Faculty of Medicine, İstanbul, Turkey

Sinan Trabulus, İstanbul University, Cerrahpaşa Faculty of Medicine, İstanbul, Turkey

Funda Sarı, Akdeniz University, Faculty of Medicine, Antalya, Turkey

### Neurology

**Section Editor:** Ayça Özkul, University of Health Sciences, Turkey, Başakşehir Çam & Sakura City Hospital, İstanbul, Turkey

Utku Oğan Akyıldız, Adnan Menderes University, Faculty of Medicine, Aydın, Turkey

Murat Çabalar, University of Health Sciences, Turkey, Başakşehir Çam & Sakura City Hospital, İstanbul, Turkey

Ufuk Emre, İstanbul Training and Research Hospital, İstanbul, Turkey

Ayhan Köksal, University of Health Sciences, Turkey, Başakşehir Çam & Sakura City Hospital, İstanbul, Turkey

### Neurosurgery

Erhan Arslan, Karadeniz Technical University, Faculty of Medicine, Trabzon, Turkey

Ali Dalgiç, Ankara City Hospital, Ankara, Turkey

Lütfi Şinasi Postalci, University of Health Sciences, Turkey, Başakşehir Çam & Sakura City Hospital, İstanbul, Turkey

Osman Tanrıverdi, University of Health Sciences, Turkey, Başakşehir Çam & Sakura City Hospital, İstanbul, Turkey

Yasin Temel, Maastrich University Faculty of Medicine, Maastricht, Netherlands

### Nuclear Medicine

Ömer Aras, Memorial Sloan Kettering Cancer Center, New York, United States

Sanaz Behnia, Washington University, School of Medicine, Seattle, United States

Tevfik Fikret Çermik, İstanbul Training and Research Hospital, İstanbul, Turkey

### Obstetrics and Gynecology

**Section Editor:** Burak Yücel, University of Health Sciences, Turkey, Başakşehir Çam & Sakura City Hospital, İstanbul, Turkey

Berna Aslan Çetin, University of Health Sciences, Turkey, Başakşehir Çam & Sakura City Hospital, İstanbul, Turkey

Murat Ekin, Bakırköy Dr. Sadi Kanuk Training and Research Hospital, İstanbul, Turkey

Onur Erol, Antalya Training and Research Hospital, Antalya, Turkey

Veli Mihmanlı, University of Health Sciences, Turkey, Prof. Dr. Cemil Taşcıoğlu City Hospital, İstanbul, Turkey

Mete Gürol Uğur, Gaziantep University, Faculty of Medicine, Gaziantep, Turkey

Mesut Abdülkerim Ünsal, Çanakkale Onsekiz Mart University, Faculty of Medicine, Çanakkale, Turkey

Levent Yaşar, Bakırköy Dr. Sadi Kanuk Training and Research Hospital, İstanbul, Turkey

### Ophtalmology

Ali Demircan, University of Health Sciences, Turkey, Başakşehir Çam & Sakura City Hospital, İstanbul, Turkey

Hayyam Kıratlı, Hacettepe University, Faculty of Medicine, Ankara, Turkey

Pelin Kaynak, İstanbul, Turkey

Sezen Karakuş, Wilmer Eye Institute, John Hopkins University, Baltimore, United States

Tekin Yaşar, Beyoğlu Eye and Research Hospital, İstanbul, Turkey

Yusuf Yıldırım, University of Health Sciences, Turkey, Başakşehir Çam & Sakura City Hospital, İstanbul, Turkey

### Orthopedics

**Section Editor:** Yavuz Arıkan, University of Health Sciences, Turkey, Prof. Dr. Cemil Taşcıoğlu City Hospital, İstanbul, Turkey

Abdul Fettah Büyük, University of Missouri, School of Medicine, Columbia, MO, United States

## Editorial Board

Haluk Çelik, Ümraniye Training and Research Hospital, İstanbul, Turkey

Yaşar Mahsut Dinçel, Namık Kemal University, Faculty of Medicine, Tekirdağ, Turkey

Volkan Gür, Binali Yıldırım University, Faculty of Medicine, Erzincan, Turkey

Bekir Eray Kılınç, Fatih Sultan Mehmet Training and Research Hospital, İstanbul, Turkey

Abdulhamid Misir, University of Health Sciences, Turkey, Başakşehir Çam & Sakura City Hospital, İstanbul, Turkey

## Otolaryngology

**Section Editor:** Şahin Ögreden, University of Health Sciences, Turkey, Başakşehir Çam & Sakura City Hospital, İstanbul, Turkey

Yalçın Alimoğlu, University of Health Sciences, Turkey, Başakşehir Çam & Sakura City Hospital, İstanbul, Turkey

Taliye Çakabay, University of Health Sciences, Turkey, Başakşehir Çam & Sakura City Hospital, İstanbul, Turkey

Hüseyin Deniz, Yeditepe University, Faculty of Medicine, İstanbul, Turkey

İbrahim Sayın, Bakırköy Dr. Sadi Konuk Training and Research Hospital, İstanbul, Turkey

Zahide Mine Yazıcı, Bakırköy Dr. Sadi Konuk Training and Research Hospital, İstanbul, Turkey

## Pathology

Banu Yılmaz Özgüven, University of Health Sciences, Turkey, Başakşehir Çam & Sakura City Hospital, İstanbul, Turkey

Hülya Akgün, Erciyes University, Faculty of Medicine, Kayseri, Turkey

Kea-Teak Jang, Sungkyunkwan University, Samsung Medical Center, Seoul, South Korea

Selvinaz Özkara, University of Health Sciences, Turkey, Başakşehir Çam & Sakura City Hospital, İstanbul, Turkey

Takuma Tajuri, Tokai University Hachioji Hospital, Tokyo, Japan

Esra Canan Kelten Talu, Tepecik Training and Research Hospital, İzmir, Turkey

## Pediatrics

**Section Editor:** Şirin Güven, Prof. İhan Varank Training and Research Hospital, İstanbul, Turkey

Vefik Arıca, Siirt University Faculty of Medicine, Siirt, Turkey

Özlem Bağ, Dr. Behçet Uz Training and Research Hospital, İzmir, Turkey

Meltem Erol, Bağcılar Training and Research Hospital, İstanbul, Turkey

Ali Kanık, Katip Çelebi University, Faculty of Medicine, İzmir, Turkey

## Pediatric Allergy

Ersoy Civelek, Ankara City Hospital, Ankara, Turkey

Emine Dibek Mısırlıoğlu, Ankara City Hospital, Ankara, Turkey

Zeynep Tamay, İstanbul University, İstanbul Faculty of Medicine, İstanbul, Turkey

## Pediatric Cardiology

**Section Editor:** İbrahim Cansaran Tanıdır, University of Health Sciences, Turkey, Başakşehir Çam & Sakura City Hospital, İstanbul, Turkey

Antonia Sanchez Andres, Hospital General Universitario de Castellon, Castello, Spain

Celal Akdeniz, Medipol University, Faculty of Medicine, İstanbul, Turkey

Hakan Aykan, Hacettepe University, Faculty of Medicine, Ankara, Turkey

Ehsan Aghaei Moghaddam, Tehran University Children's Medical Center, Tehran, Iran

İsa Özyılmaz, University of Health Sciences, Turkey, Başakşehir Çam & Sakura City Hospital, İstanbul, Turkey

## Pediatric Cardiovascular Surgery

**Section Editor:** Ali Can Hatemi, University of Health Sciences, Turkey, Başakşehir Çam & Sakura City Hospital, İstanbul, Turkey

Yüksel Atay, Ege University, Faculty of Medicine, İzmir, Turkey

Hakan Ceyran, Kartal Koşuyolu Yüksek İhtisas Training and Research Hospital, İstanbul, Turkey

Işık Şenkaya Sağnak, Bursa Uludağ University, Bursa, Turkey

Can Yerebakan, Children's National Hospital, Washington DC, United States

Okan Yıldız, University of Health Sciences, Turkey, Başakşehir Çam & Sakura City Hospital, İstanbul, Turkey

## Pediatric Critical Care Medicine

**Section Editor:** Nurettin Onur Kutlu, University of Health Sciences, Turkey, Başakşehir Çam & Sakura City Hospital, İstanbul, Turkey

Halit Çam, Sancaktepe Prof. Dr. İlhan Varank Training and Research Hospital, İstanbul, Turkey

Muhterem Duyu, Göztepe Prof. Dr. Süleyman Yalçın City Hospital, İstanbul, Turkey

Ayşe Filiz Yetimakan, Kocaeli University, Faculty of Medicine, Kocaeli, Turkey

## Pediatric Endocrinology

Semra Çetinkaya, Dr. Sami Ulus Obstetrics and Pediatrics Training and Research Hospital, Ankara, Turkey

Bumin Dünder, İzmir Katip Çelebi University, Faculty of Medicine, İzmir, Turkey

Erdal Eren, Bursa Uludağ University, Faculty of Medicine, Bursa, Turkey

**Pediatric Gastroenterology**

**Section Editor:** Günsel Kutluk, University of Health Sciences, Turkey, Başakşehir Çam & Sakura City Hospital, İstanbul, Turkey

Maşallah Baran, İzmir Katip Çelebi University, Faculty of Medicine, İzmir, Turkey

Gökhan Tümgör, Çukurova University, Faculty of Medicine, Adana, Turkey

**Pediatric Hematology**

Suar Çakı Kılıç, Ümraniye Training and Research Hospital, İstanbul, Turkey

Zeynep Canan Özdemir, Osmangazi University, Faculty of Medicine, Eskişehir, Turkey

Hüseyin Tokgöz, Necmettin Erbakan University, Meram Faculty of Medicine, Konya, Turkey

Deniz Tuğcu, İstanbul University, Faculty of Medicine, İstanbul, Turkey

Ayşe Turhan, Göztepe Prof. Dr. Süleyman Yalçın City Hospital, İstanbul, Turkey

**Pediatric Immunology**

**Section Editor:** Çiğdem Aydoğmuş, University of Health Sciences, Turkey, Başakşehir Çam & Sakura City Hospital, İstanbul, Turkey

Safa Barış, Marmara University, Faculty of Medicine, İstanbul, Turkey

Ferah Genel, Dr. Behçet Uz Training and Research Hospital, İzmir, Turkey

**Pediatric Infectious Disease**

**Section Editor:** Canan Caymaz, University of Health Sciences, Turkey, Başakşehir Çam & Sakura City Hospital, İstanbul, Turkey

Nevin Hatipoğlu, Bakırköy Dr. Sadi Konuk Training and Research Hospital, İstanbul, Turkey

Eda Karadağ Öncel, Tepecik Training and Research Hospital, İzmir, Turkey

**Pediatric Metabolism**

**Section Editor:** Hasan Önal, University of Health Sciences, Turkey, Başakşehir Çam & Sakura City Hospital, İstanbul, Turkey

Çiğdem Seher Kasapkara, Yıldırım Beyazıt University, Faculty of Medicine, Ankara, Turkey

**Pediatric Nephrology**

**Section Editor:** Sevgi Yavuz, University of Health Sciences, Turkey, Başakşehir Çam & Sakura City Hospital, İstanbul, Turkey

Hasan Dursun, University of Health Sciences, Turkey, Prof. Dr. Cemil Taşcıoğlu City Hospital, İstanbul, Turkey

Alev Yılmaz, İstanbul University, İstanbul Faculty of Medicine, İstanbul, Turkey

**Pediatric Neurology**

**Section Editor:** İhsan Kafadar, University of Health Sciences, Turkey, Başakşehir Çam & Sakura City Hospital, İstanbul, Turkey

Esra Gürkaş, Ankara City Hospital, Ankara, Turkey

Andreas Hahn, Justus Liebig University, Giessen, Germany

Gülşen Köse, İstinye University, Faculty of Medicine, İstanbul, Turkey

**Pediatric Psychiatry**

Caner Mutlu, University of Health Sciences, Turkey, Başakşehir Çam & Sakura City Hospital, İstanbul, Turkey

**Pediatric Romatology**

Nuray Aktay Ayaz, İstanbul University, Faculty of Medicine, İstanbul, Turkey

Sezgin Şahin, İstanbul University, Cerrahpaşa Faculty of Medicine, İstanbul, Turkey

Mustafa Çakan, Zeynep Kamil Maternity and Children's Training and Research Hospital, İstanbul, Turkey

**Pediatric Surgery**

Melih Akın, University of Health Sciences, Turkey, Başakşehir Çam & Sakura City Hospital, İstanbul, Turkey

Süleyman Çelebi, University of Health Sciences, Turkey, Başakşehir Çam & Sakura City Hospital, İstanbul, Turkey

Muazzez Çevik, Mehmet Ali Aydınlar Acıbadem University, İstanbul, Turkey

Çetin Ali Karadağ, University of Health Sciences, Turkey, Prof. Dr. Cemil Taşcıoğlu City Hospital, İstanbul, Turkey

Abdullah Yıldız, Şişli Hamidiye Etfal Training and Research Hospital, İstanbul, Turkey

**Perinatology**

**Section Editor:** İbrahim Polat, University of Health Sciences, Turkey, Başakşehir Çam & Sakura City Hospital, İstanbul, Turkey

Muhittin Etfal Avcı, Antalya Memorial Hospital, Antalya, Turkey

Hakan Erenel, University of Health Sciences, Turkey, Başakşehir Çam & Sakura City Hospital, İstanbul, Turkey

Fikret Gökhan Göynüner, Düzce University, Faculty of Medicine, Düzce, Turkey

Mekin Sezik, Süleyman Demirel University, Faculty of Medicine, Isparta, Turkey

Özhan Turan, University of Maryland, School of Medicine, Baltimore, United States

**Psychiatry**

**Section Editor:** Oya Güçlü, University of Health Sciences, Turkey, Başakşehir Çam & Sakura City Hospital, İstanbul, Turkey

Osama Abulseoud, Biomedical Research Center, Maryland, United States

Aslı Ener Darçın, University of Health Sciences, Turkey, Başakşehir Çam & Sakura City Hospital, İstanbul, Turkey

Hüsnü Erkmen, Üsküdar University, Faculty of Medicine, İstanbul, Turkey



## Editorial Board

Cüneyt Evren, Bakırköy Mental Health Research and Teaching Hospital, İstanbul, Turkey

Fatih Öncü, Bakırköy Mental Health Research and Teaching Hospital, İstanbul, Turkey

Ömer Şenormancı, Bursa Yüksek İhtisas Training and Research Hospital, Bursa, Turkey

### Physical Medicine and Rehabilitation

**Section Editor:** Evrim Coşkun, University of Health Sciences, Turkey, Başakşehir Çam & Sakura City Hospital, İstanbul, Turkey

Sevgi İkbali Afşar, Başkent University, Faculty of Medicine, Ankara, Turkey

Domenica Corda, Polimedica San Lanfranco, Pavia, Italy

Sibel Ünsal Delioğlu, Ankara City Hospital, Ankara, Turkey

Beril Özcan Doğu, Şişli Hamidiye Etfal, Training and Research Hospital, İstanbul

### Plastic and Reconstructive Surgery

Ufuk Emekli, İstanbul University, İstanbul Faculty of Medicine, İstanbul, Turkey

İsmail Ermiş, İstanbul University, İstanbul Faculty of Medicine, İstanbul, Turkey

Ömer Berköz, İstanbul University, İstanbul Faculty of Medicine, İstanbul, Turkey

### Radiation Oncology

Yasemin Bölükbaşı, Koç University, Faculty of Medicine, İstanbul, Turkey

Vuslat Yürüt Çaloğlu, Trakya University, Faculty of Medicine, Edirne, Turkey

Daniel Low, University of California, Los Angeles, United States

Mahmut Özşahin, University of Lausanne Medical Center, Lausanne, Switzerland

Aylin Fidan Korum Şahin, Akdeniz University, Faculty of Medicine, Antalya, Turkey

Ömür Karakoyun Çelik, Manisa Celal Bayar University, Faculty of Medicine, Manisa, Turkey

### Radiology

Serkan Arıbal, University of Health Sciences, Turkey, Prof. Dr. Cemil Taşcıoğlu City Hospital, İstanbul, Turkey

Bengi Gürses, Koç University, Faculty of Medicine, İstanbul, Turkey

Elif Hocaoglu, Bakırköy Dr. Sadi Konuk Training and Research Hospital, İstanbul, Turkey

Burak Koçak, University of Health Sciences, Turkey, Başakşehir Çam & Sakura City Hospital, İstanbul, Turkey

Neslihan Taşdelen, Yeditepe University, Faculty of Medicine, İstanbul, Turkey

### Renal Transplantation

**Section Editor:** Melih Kara, University of Health Sciences, Turkey, Başakşehir Çam & Sakura City Hospital, İstanbul, Turkey

Süheyla Apaydın, Yeditepe University, Faculty of Medicine, İstanbul, Turkey

İbrahim Berber, Acıbadem Mehmet Ali Aydınlar University, Faculty of Medicine, İstanbul, Turkey

Alp Gürkan, Okan University, Faculty of Medicine, İstanbul, Turkey

Gürsel Yıldız, Yeni Yüzyıl University, İstanbul, Turkey

### Romatology

**Section Editor:** Cemal Bes, University of Health Sciences, Turkey, Başakşehir Çam & Sakura City Hospital, İstanbul, Turkey

Sibel Zehra Aydın, Ottawa University, Faculty of Medicine, Ottawa, Canada

Vedat Hamuryudan, İstanbul Cerrahpaşa University, Faculty of Medicine, İstanbul, Turkey

Umut Kalyoncu, Hacettepe University, Faculty of Medicine, Ankara, Turkey

Timuçin Kaşifoğlu, Eskişehir Osmangazi University, Faculty of Medicine, Eskişehir, Turkey

### Thoracic Surgery

**Section Editor:** Hasan Akın, University of Health Sciences, Turkey, Başakşehir Çam & Sakura City Hospital, İstanbul, Turkey

Hacıali Kılıçgün, Abant İzzet Baysal University, Faculty of Medicine, Bolu, Turkey

Ali Cevat Kutluk, University of Health Sciences, Turkey, Başakşehir Çam & Sakura City Hospital, İstanbul, Turkey

Alper Toker, West Virginia University, Faculty of Medicine, Morgantown, United States

### Urology

**Section Editor:** Abdulmuttalip Şimsek, University of Health Sciences, Turkey, Başakşehir Çam & Sakura City Hospital, İstanbul, Turkey

Feyzi Arda Atar, Bakırköy Dr. Sadi Konuk Training and Research Hospital, İstanbul, Turkey

Zafer Gökhan Gürbüz, Adana City Hospital, Adana, Turkey

Yusuf Özlem İlbey, Tepecik Training and Research Hospital, İzmir, Turkey

Sinan Levent Kireççi, Şişli Hamidiye Etfal Training and Research Hospital, İstanbul, Turkey

Alper Ötünçtemur, University of Health Sciences, Turkey, Prof. Dr. Cemil Taşcıoğlu City Hospital, İstanbul, Turkey

Halil Lütfi Canat, University of Health Sciences, Turkey, Başakşehir Çam & Sakura City Hospital, İstanbul, Turkey

**Journal History**

Cam ve Sakura Medical Journal (CSMJ) is an international, scientific, open access periodical published journal. It has independent, unbiased, and double-blinded peer-review principles. The journal is the official publication of the Basakşehir Cam & Sakura City Hospital. It is published three times per year (April, August, December). A special supplement including interesting, novel and attractive theme has also been published every year. The publication language of the journal is English.

**Title:** Cam ve Sakura Medical Journal

**Official abbreviation:** CSMJ, Csmedj

**E-ISSN:** 2791-8823

**Free-of-Charge Publication**

No fee is charged from the authors during the submission, evaluation and publication process. Journal practices, ethical rules, technical information and necessary forms are specified on the journal's web page.

The manuscripts must be submitted via the Manuscript Manager online article system, represented on the journal website.

**Abstracting and Indexing**

J-Gate, Türk Medline, EBSCO, Gale

**Copyright**

After the publication decision is made and accepted, the "Copyright Transfer Form" should be attached to the submissions. The form can also be downloaded from the journal's article submission system. The Copyright Transfer Form must be signed by all contributing authors and a scanned version of this wet-signed document must be submitted.

By citing the author and the journal at the same time, without any profit-making motive, and only for educational purposes, the readers can copy the article without the permission of the copyright holder.

Cam ve Sakura Medical Journal is an open access publication, and the journal's publication model is based on Budapest Open Access Initiative (BOAI) declaration. All published content is available online, free of charge at <https://csmedj.org/>. The journal's content is licensed under a Creative

Commons Attribution-NonCommercial (CC BY-NC-ND) 4.0 International License which permits third parties to share and adapt the content for non-commercial purposes by giving the appropriate credit to the original work.

**Digital Archiving and Preservation Policy**

Digital preservation is a set of processes and activities that ensure the retrieval and distribution of information now available in digital formats to guarantee long-term, perpetual access. The preservation policy includes the following measures:

**Website Archiving**

All of the electronic content (website, manuscript, etc.) is stored in three different sources. Content on a server is online and accessible to readers. A copy of the same content is preserved as a backup on two other sources. Should a server fail, other resources can be brought online, and the website is expected to be available in 24-36 hours.

**Abstracting/Indexing Services**

Our journal's Abstracting/Indexing services store essential information about articles. In addition, some of our journal's Abstracting/Indexing services archive metadata about the article and electronic versions of the articles. In this way, copies of articles are presented to the scientific community through these systems as an alternative to journals.

**Issuing Body**

Galenos Yayınevi Tic. Ltd. Sti.

Molla Gürani Mah. Kaçamak Sok. No: , 3409, Fındıkzade, İstanbul, Türkiye

**Phone:** +90 212 621 99 25

**Fax:** +90 212 621 99 27

**E-mail:** [info@galenos.com.tr](mailto:info@galenos.com.tr)



## Aims and Scope

Cam ve Sakura Medical Journal (CSMJ) is an international, scientific, open access periodical published journal. It has independent, unbiased, and double-blinded peer-review principles. The journal is the official publication of the Basakşehir Cam & Sakura City Hospital. It is published three times per year (April, August, December). A special supplement including interesting, novel and attractive theme has also been published every year. The publication language of the journal is English.

Cam & Sakura Medical Journal publishes original experimental or clinical research, review articles, case reports, technical reports, diagnostic puzzle, clinical images, video article, novel insight, and letters to the editor in the field of general medicine. Review articles will be only prepared by expert academicians upon invitation. The journal's target audience includes academics and expert physicians working in all fields of general medicine.

**Cam ve Sakura Medical Journal does not charge any fees for submission, processing or publication of articles.**

The editorial and publication process of the journal are shaped in accordance with the guidelines of the International Committee of Medical Journal Editors (ICMJE), World Association of Medical Editors (WAME), Council of Science Editors (CSE), Committee on Publication Ethics (COPE), European Association of Science Editors (EASE), and National Information Standards Organization (NISO). The journal is in conformity with the Principles of Transparency and Best Practice in Scholarly Publishing.

Cam ve Sakura Medical Journal is currently indexed in J-Gate.

**Title:** Cam ve Sakura Medical Journal

**Official abbreviation:** CSMJ, Csmedj

**E-ISSN:** 2791-8823

**Open Access Policy**

This journal provides immediate open access to its content on the principle that making research freely available to the public supports a greater global exchange of knowledge.

Author (s) and copyright owner (s) grant access to all users for the articles published in the Cam ve Sakura Medical Journal as free of charge. Articles may be used provided that they are cited.

Open Access Policy is based on rules of Budapest Open Access Initiative (BOAI). By "open access" to [peer-reviewed research literature], we mean its free availability on the public internet, permitting any users to read, download, copy, distribute, print, search, or link to the full texts of these articles, crawl them for indexing, pass them as data to software, or use them for any other lawful purpose, without financial, legal, or technical barriers other than those inseparable from gaining access to the internet

itself. The only constraint on reproduction and distribution, and the only role for copyright in this domain, should be to give authors control over the integrity of their work and the right to be properly acknowledged and cited.

**Creative Commons**

A Creative Commons license is a public copyright license that provides free distribution of copyrighted works or studies. Authors use the CC license to transfer the right to use, share or modify their work to third parties. This journal is licensed under a Creative Commons Attribution-NonCommercial 4.0 International (CC BY-NC-ND 4.0) which permits third parties to share and adapt the content for non-commercial purposes by giving the appropriate credit to the original work.

Open access is an approach that supports interdisciplinary development and encourages collaboration between different disciplines. Therefore, Cam ve Sakura Medical Journal contributes to the scientific publishing literature by providing more access to its articles and a more transparent review process.

**Advertisement Policy**

Potential advertisers should contact the Editorial Office. Advertisement images are published only upon the Editor-in-Chief's approval.

**Material Disclaimer**

Statements or opinions stated in articles published in the journal do not reflect the views of the editors, editorial board and/or publisher; The editors, editorial board and publisher do not accept any responsibility or liability for such materials. All opinions published in the journal belong to the authors.

**Contact****Editorial Office**

**Address:** Başakşehir Cam and Sakura City Hospital, Başakşehir Olimpiyat Bulvarı Yolu, 34480 Başakşehir, İstanbul/Turkey

**E-mail:** info@csmedj.org

**Publisher Info****Galenos Publishing House**

**Address:** Molla Gürani Mahallesi Kaçamak Sokak No: , 34093 Fındıkzade - İstanbul/Turkey

**Phone:** +90 (212) 621 99 25

**Fax:** +90 (212) 621 99 27

**E-mail:** info@galenos.com.tr

**Peer- Review**

Submission is considered on the conditions that papers are previously unpublished and are not offered simultaneously elsewhere; that authors have read and approved the content, and all authors have also declared all competing interests; and that the work complies with the Ethical Approval and has been conducted under internationally accepted ethical standards. If ethical misconduct is suspected, the Editorial Board will act in accordance with the relevant international rules of publication ethics (i.e., COPE guidelines).

Editorial policies of the journal are conducted as stated in the rules recommended by the Council of Science Editors and reflected in the Uniform Requirements for Manuscripts Submitted to Biomedical Journals: Writing and Editing for Biomedical Publication. Accordingly, authors, reviewers, and editors are expected to adhere to the best practice guidelines on ethical behavior contained in this statement.

Submitted manuscripts are subjected to double-blinded peer-review. The scientific board guiding the selection of the papers to be published in the journal consists of elected specialists of the journal and, if necessary, selected from national and international experts in the relevant field of research. All manuscripts are reviewed by the editor, section associate editors and at least three internal and external expert reviewers. All research articles are interpreted by a statistical editor as well.

**Human and Animal Rights**

For the experimental, clinical and drug human studies, approval by ethical committee and a statement on the adherence of the study protocol to the international agreements (World Medical Association Association of Helsinki "Ethical Principles for Medical Research Involving Human Subjects," amended October 2013) are required. In experimental animal studies, the authors should indicate that the procedures followed were by animal rights (Guide for the care and use of laboratory animals), and they should obtain animal ethics committee approval. The Ethics Committee approval document should be submitted to the Cam ve Sakura Medical Journal (CSMJ) together with the manuscript.

The approval of the ethics committee, statement on the adherence to international guidelines mentioned above and that the patient's informed consent is obtained should be indicated in the 'Material and Method' section and is required for case reports whenever data/media used could reveal the identity of the patient. The declaration of the conflict of interest between authors, institutions, acknowledgement of any financial or material support, aid is mandatory for authors submitting a manuscript, and the statement should appear at the end of the manuscript. Reviewers are required to report if any potential conflict of interest exists between the reviewer and authors, institutions.

**Plagiarism and Ethical Misconduct**

This journal uses "iThenticate" to screen all submissions for plagiarism before publication.

It is essential that authors avoid all forms of plagiarism and ethical misconduct as represented below.

**Plagiarism:** To Republish whole or part of a content in another author's publication without attribution.

**Fabrication:** To publish data and findings/results that do not exist.

**Duplication:** Using data from another publication that includes republishing an article in different languages.

**Salamisation:** Creating multiple publications by supernaturally splitting the results of a study.

**Data Manipulation/Falsification:** Manipulating or deliberately distorting research data to give a false impression.

We disapprove of such unethical practices as plagiarism, fabrication, duplication, data manipulation/falsification and salamisation and efforts to influence the review process with such practices as gifting authorship, inappropriate acknowledgements, and references in line with the COPE flowcharts.

Submitted manuscripts are also subjected to the evaluation of plagiarism, duplicate publication by automatic software. Authors are obliged to acknowledge if they published study results in whole or in part in the form of abstracts.

**A. DUTIES OF PUBLISHER:****Handling of unethical publishing behaviour**

The publisher will take all appropriate measures to modify the article in question, in close cooperation with the editors, in cases of alleged or proven scientific misconduct, fraudulent publication, or plagiarism. This includes the prompt publication of an erratum, disclosure, or retraction of the affected work in the most severe case. Together with the editors, the publisher will take reasonable steps to detect and prevent the publication of articles in which research misconduct occurs and will under no circumstances promote or knowingly allow such abuse to occur.

**Editorial Autonomy**

Cam ve Sakura Medical Journal (CSMJ) is committed to ensuring the autonomy of editorial decisions without influence from anyone or commercial partners.

**Intellectual Property and Copyright**

Cam ve Sakura Medical Journal (CSMJ) protects the property and copyright of the articles published in the journal and maintains each article's published version of the record. The journal provides the integrity and transparency of each published article.

**Scientific Misconduct**

Cam ve Sakura Medical Journal (CSMJ)'s publisher always takes all appropriate measures regarding fraudulent publication or plagiarism.



## Peer Review, Publication Ethics and Malpractice Statement

**B. DUTIES OF EDITORS:****Decision on Publication and Responsibility**

The editor of the journal keeps under control everything in the journal and strives to meet the needs of readers and authors. The editor is also responsible for deciding which articles submitted to the journal should be published and guided by the policies subjected to legal requirements regarding libel, copyright infringement, and plagiarism. The editor might discuss with reviewers while making publication decisions. The editor is responsible for the contents and overall quality of the publication. Editor ought to provide a fair and appropriate peer-review process.

**Objectivity**

Articles that are submitted to the journal are always evaluated without any prejudice.

**Confidentiality**

The editor must not disclose any information about a submitted article to anyone other than editorial staff, reviewers, and publisher.

**Conflicts of Interest and Disclosure**

Cam ve Sakura Medical Journal (CSMJ) does not allow any conflicts of interest between the parties such as authors, reviewers and editors. Unpublished materials in a submitted article must not be used by anyone without the express written assent of the author.

**Fundamental Errors in Published Works**

Authors are obliged to notify the journal's editors or publisher immediately and to cooperate with them to correct or retract the article if significant errors or inaccuracies are detected in the published work. If the editors or publisher learn from a third party that a published work contains a material error or inaccuracy, the authors must promptly correct or retract the article or provide the journal editors with evidence of the accuracy of the article.

**C. DUTIES OF REVIEWERS:****Evaluation**

Reviewers evaluate manuscripts without origin, gender, sexual orientation or political philosophy of the authors. Reviewers also ensure a fair blind peer review of the submitted manuscripts for evaluation.

**Confidentiality**

All the information relative to submitted articles is kept confidential. The reviewers must not be discussed with others except if authorized by the editor.

**Disclosure and Conflict of Interest**

The reviewers have no conflict of interest regarding parties such as authors, funders, editors, etc.

**Contribution to editor**

Reviewers help the editor in making decisions and may also assist the author in improving the manuscript.

**Objectivity**

They always do objective judgment evaluation. The reviewers express their views clearly with appropriate supporting arguments.

**Acknowledgement of Sources**

Reviewers ought to identify a relevant published study that the authors have not cited. Reviewers also call to the editor's attention any substantial similarity or overlap between the manuscript and any other published paper of which they have personal knowledge.

**D. DUTIES OF AUTHORS:****Reporting Standards**

A submitted manuscript should be original, and the authors ensure that the manuscript has never been published previously in any journal. Data of the research ought to be represented literally in the article. A manuscript ought to include adequate detail and references to allow others to replicate the study.

**Originality**

The authors who want to submit their study to the journal must ensure that their study is entirely original. The words and sentences getting from the literature should be appropriately cited.

**Multiple Publications**

Authors should not submit the same study for publishing in any other journals. Simultaneous submission of the same study to more than one journal is unacceptable and constitutes unethical behaviour.

**Acknowledgement of Sources**

Convenient acknowledgement of the study of others has to be given. Authors ought to cite publications that have been efficient in determining the study. All of the sources that used the process of the study should be remarked.

**Authorship of a Paper**

Authorship of a paper ought to be limited to those who have made a noteworthy contribution to the study. If others have participated in the research, they should be listed as contributors. Authorship also includes a corresponding author who is in communication with the editor of a journal. The corresponding author should ensure that all appropriate co-authors are included in a paper.

**Disclosure and Conflicts of Interest**

All sources of financial support should be disclosed. All authors ought to disclose a meaningful conflict of interest in the process of forming their study. Any financial grants or other support received for a submitted study from individuals or institutions should be disclosed to the Editorial Board of the Cam ve Sakura Medical Journal (CSMJ). The ICMJE Potential Conflict of Interest Disclosure Form should be filled in and submitted by all contributing authors to disclose a potential conflict of interest. The journal's Editorial Board determines cases of a potential conflict of interest

**Peer Review, Publication Ethics and Malpractice Statement**

of the editors, authors, or reviewers within the scope of COPE and ICMJE guidelines.

Conditions that provide financial or personal benefit bring about a conflict of interest. The reliability of the scientific process and the published articles is directly related to the objective consideration of conflicts of interest during the planning, implementation, writing, evaluation, editing, and publication of scientific studies.

Financial relations are the most easily identified conflicts of interest, and it is inevitable that they will undermine the credibility of the journal, the authors, and the science. These conflicts can be caused by individual relations, academic competition, or intellectual approaches. The authors should refrain as much as possible from making agreements with sponsors in the opinion of gaining profit or any other advantage that restrict their ability to access all data of the study or analyze, interpret, prepare, and publish their articles. In order to prevent conflicts of interest, editors should refrain from bringing together those who may have any relationship between them during the evaluation of the studies. The editors, who make the final decision about the articles, should not have any personal, professional or financial ties with any of the issues they are going to decide.

Authors should inform the editorial board concerning potential conflicts of interest to ensure that their articles will be evaluated within the framework of ethical principles through an independent assessment process.

If one of the editors is an author in any manuscript, the editor is excluded from the manuscript evaluation process. In order to prevent any conflict of interest, the article evaluation process is carried out as double-blinded. Because of the double-blinded evaluation process, except for the Editor-in-Chief, none of the editorial board members, international advisory board members, or reviewers is informed about the authors of the manuscript or institutions of the authors.

Our publication team works devotedly to ensuring that the evaluation process is conducted impartially, considering all these situations.

The conflict of interest form that each author has to sign must be uploaded during the manuscript submission.

## Instructions to Authors

**Editorial, Publication and Peer-review Process**

The editorial and publication processes of the journal are established in accordance with the international guidelines. The most important criteria of the manuscripts for publication include originality, scientific quality, and citation potential. The authors should guarantee that the manuscripts have not been previously published and/or are under consideration for publication elsewhere. The scientific and ethical liability of the manuscripts belongs to the authors, and the copyright of the manuscripts belongs to CSMJ. Authors are responsible for the contents of the manuscript and the accuracy of the references. All manuscripts submitted for publication must be accompanied by the Copyright Agreement and Authorship Acknowledgement Form. The manuscript should be submitted when this form has been signed by all the authors. By the submission of this form, it is understood that neither the manuscript nor the data it contains have been submitted elsewhere or previously published, and authors declare the statement of scientific contributions and responsibilities of all authors.

Manuscripts submitted to the CSMJ will be evaluated by a double-blind peer-review process. Each submission will be reviewed by the chief editor, deputy and associate editors and at least two external, independent peer expert reviewers. The editorial board will invite an external and independent editor to manage the evaluation processes of manuscripts submitted by editors or by the editorial board members of the journal. The reviewers will be requested to complete the review process within 6-8 weeks. Authors will be informed within a period of 8 weeks about the process. Upon review, those manuscripts, which are accepted, shall be published in the journal and issued on <http://www.csmedj.org>.

CSMJ does not charge any article submission or processing charges.

**General Guidelines**

Manuscripts can only be submitted electronically through the Manuscript Manager website ([csmedj.manuscriptmanager.net](http://csmedj.manuscriptmanager.net)) after creating an account. This system allows online submission and review.

**Format:** Manuscripts should be prepared using Microsoft Word, size A4 with 2.5 cm margins on all sides, 12 pt Arial font and 1.5 line spacing.

**Abbreviations:** Abbreviations should be defined at first mention and used consistently thereafter. Internationally accepted abbreviations should be used; refer to scientific writing guides as necessary.

**Cover letter:** The cover letter should include statements about the manuscript type, single-journal submission affirmation, conflict of interest statement, sources of outside funding, equipment (if applicable), approval of language for articles in English and approval of statistical analysis for original research articles.

The Editorial Policies and General Guidelines for manuscript preparation specified below are based on "Recommendations for the Conduct, Reporting, Editing, and Publication of Scholarly Work in Medical Journals (ICMJE Recommendations)" by the International Committee of Medical Journal Editors (2016, archived at <http://www.icmje.org/>).

Preparation of research articles, systematic reviews and meta-analyses must comply with study design guidelines:

CONSORT statement for randomized controlled trials (Moher D, Schultz KF, Altman D, for the CONSORT Group. The CONSORT statement

revised recommendations for improving the quality of reports of parallel-group randomized trials. JAMA 2001; 285:1987-91) (<http://www.consort-statement.org/>);

PRISMA statement of preferred reporting items for systematic reviews and meta-analyses (Moher D, Liberati A, Tetzlaff J, Altman DG, The PRISMA Group. Preferred Reporting Items for Systematic Reviews and Meta-Analyses: The PRISMA Statement. PLoS Med 2009; 6(7): e1000097.) (<http://www.prisma-statement.org/>);

STARD checklist for the reporting of studies of diagnostic accuracy (Bossuyt PM, Reitsma JB, Bruns DE, Gatsonis CA, Glasziou PP, Irwig LM, et al., for the STARD Group. Towards complete and accurate reporting of studies of diagnostic accuracy: the STARD initiative. Ann Intern Med 2003;138:40-4.) (<http://www.stard-statement.org/>);

STROBE statement, a checklist of items that should be included in reports of observational studies (<http://www.strobe-statement.org/>);

MOOSE guidelines for meta-analysis and systemic reviews of observational studies (Stroup DF, Berlin JA, Morton SC, et al. Meta-analysis of observational studies in epidemiology: a proposal for reporting Meta-analysis of observational Studies in Epidemiology (MOOSE) group. JAMA 2000; 283: 2008-12).

Manuscripts are accepted only online and can be submitted electronically through web site (<http://csmedj.org>) after creating an account. This system allows online submission and review. The ORCID (Open Researcher and Contributor ID) number of the correspondence author should be provided while sending the manuscript. A free registration can be done at <http://orcid.org>. The manuscripts gathered with this system are archived according to ICMJE-[www.icmje.org](http://www.icmje.org), Index Medicus (Medline/PubMed) and Ulakbim-Turkish Medicine Index Rules. Rejected manuscripts, except artworks, are not returned.

All pages of the manuscript should be numbered at the top right-hand corner, except for the title page. Papers should include the necessary number of tables and figures in order to provide a better understanding. The rules for the title page, references, figures and tables are valid for all types of articles published in this journal. Manuscripts submitted to the journal will first go through a technical evaluation process where the editorial office staff will ensure that the manuscript has been prepared and submitted in accordance with the journal's guidelines. Submissions that do not conform to the journal's guidelines will be returned to the submitting author with technical correction requests.

**Ethical Guidelines**

An approval of research protocols by the Ethics Committee in accordance with international agreements (World Medical Association Declaration of Helsinki "Ethical Principles for Medical Research Involving Human Subjects," amended in October 20, [www.wma.net](http://www.wma.net)) is required for experimental, clinical, and drug studies. Information about patient consent, the name and approval number of the ethics committee should be stated in the manuscript. Submissions that do not have ethical approval will be rejected after editorial review due to the lack of approval.

For experimental studies performed on animals, approval of research protocols by the Ethics Committee in accordance with international agreements is required. Also, a statement including measures for the

prevention of pain and suffering should be declared in the manuscript. For manuscripts concerning experimental research on humans, a statement should be included that written informed consent of patients and volunteers was obtained following a detailed explanation of the procedures that they may undergo. The authors have the responsibility to protect the patients' anonymity carefully. For photographs that may reveal the identity of the patients, signed releases of the patient or their legal representative should be obtained, and publication approval must be provided in the manuscript. Authors must provide disclosure/acknowledgement of financial or material support, if any was received, for the submitted study. If the article includes any direct or indirect commercial links or if any institution provided material support to the study, authors must state in the cover letter that they have no relationship with the commercial product, drug, a pharmaceutical company. Concerned; or specify the type of relationship. Authors must provide a conflict of interest statement and an authorship contribution form.

The scientific board guiding the selection of the papers to be published in the Journal consists of elected experts of the Journal, and if necessary, selected from national and international authorities. The Editor-in-Chief, Associate Editors, biostatistics expert and language editors may make minor corrections to accepted manuscripts that do not change the main text of the paper.

### Plagiarism and Ethical Misconduct

Cam & Sakura Medical Journal is sensitive about plagiarism. All submissions are screened by a similarity detection software (iThenticate by CrossCheck) at any point during the peer-review and/or production process. Authors are strongly recommended to avoid any form of plagiarism and ethical misconduct for the prevention of acceptance and/or publication processes. Results indicating plagiarism may result in manuscripts being returned for revision or rejected. In case of any suspicion or claim regarding scientific shortcomings or ethical infringement, the journal reserves the right to submit the manuscript to the supporting institutions or other authorities for investigation. CSMJ accepts the responsibility of initiating action but does not undertake any responsibility for an actual investigation or any power of decision.

### Statistics

Every submission that contains statistical analyses or data-processing steps must explain the statistical methods in a detailed manner, either in the Methods or the relevant figure legend. Any special statistical code or software needed for scientists to reuse or reanalyse datasets should be discussed. We encourage authors to make openly available any code or scripts that would help readers reproduce any data-processing steps. Authors are also encouraged to summarize their datasets with descriptive statistics which should include the n value for each dataset; a clearly labelled measure of centre (such as the mean or the median); and a clearly labelled measure of variability (such as standard deviation or range). Ranges are more appropriate than standard deviations or standard errors for small datasets. Graphs should include clearly labelled error bars. Authors must state whether a number that follows the  $\pm$  sign is a standard error (s.e.m.) or a standard deviation (s.d.). Authors must clearly explain the

independence of any replicate measurements, and 'technical replicates' – repeated measurements on the same sample – should be clearly identified. When hypothesis-based tests must be used, authors should state the name of the statistical test; the n value for each statistical analysis; the comparisons of interest; a justification for the use of that test (including, for example, a discussion of the normality of the data when the test is appropriate only for normal data); the alpha level for all tests, whether the tests were one-tailed or two-tailed; and the actual p-value for each test (not merely 'significant' or 'p < 0.05'). It should be clear what statistical test was used to generate every p-value. Use of the word 'significant' should always be accompanied by a p-value; otherwise, use 'substantial', 'considerable', etc. Multiple test corrections must be used when appropriate and described in detail in the manuscript.

All manuscripts selected for full peer review will be assessed by a statistical editor, and their comments must be addressed in full.

### Preparation of the Manuscript

#### a. Title Page

The title page should include the full title of the manuscript; information about the author(s) including names, affiliations, highest academic degree and ORCID numbers; contact information (address, phone, mail) of the corresponding author. If the content of the paper has been presented before, and if the summary has been published, the time and place of the conference should be denoted on this page. If any grants or other financial support has been given by any institutions or firms for the study, information must be provided by the authors.

For regular article submissions, "What's known on this subject?" and the "What this study adds?" summaries.

This page should include the title of the manuscript, short title, name(s) of the authors and author information. The following descriptions should be stated in the given order:

1. Title of the manuscript (English), as concise and explanatory as possible, including no abbreviations, up to 135 characters
2. Short title (English), up to 60 characters
3. Name(s) and surname(s) of the author(s) (without abbreviations and academic titles) and affiliations
4. Name, address, e-mail, phone and fax number of the corresponding author
5. The place and date of the scientific meeting in which the manuscript was presented and its abstract published in the abstract book, if applicable.
6. The ORCID (Open Researcher and Contributor ID) number of all authors should be provided while sending the manuscript. A free registration can be done at <http://orcid.org>

#### b. Abstract

The abstract should summarize the manuscript and should not exceed 300 words. The abstract of the original articles consists of subheadings including "Objective, Methods, Results, and Conclusion". Separate abstract sections are not used in the submission of the review articles, case reports, technical reports, diagnostic puzzles, clinical images, and novel articles. The use of abbreviations should be avoided. Any abbreviations used must be taken into consideration independently of the abbreviations used in the text.



## Instructions to Authors

**c. Keywords**

A list of minimum 4, but no more than 6 keywords must follow the abstract. Keywords in English should be consistent with "Medical Subject Headings (MESH)".

**d. Original Article**

The instructions in general guidelines should be followed. The main headings of the text should include "Introduction, Material and Methods, Results, Discussion, Study Limitations and Conclusion". The introduction should include the rationale and the background of the study. The results of the study should not be discussed in this part. "Materials and methods" section should be presented in sufficient details to permit the repetition of the work. The statistical methods used should be clearly indicated. Results should also be given in detail to allow the reproduction of the study. The Discussion section should provide a correct and thorough interpretation of the results with the relevant literature. The results should not be repeated in the Discussion Part. The references should be directly related to the findings of the authors. Study Limitation should be detailed in the section. The conclusion section should be highlighted and interpreted with the study's new and important findings.

The excessive use of abbreviations is to be avoided. All abbreviations should be defined when first used by placing them in brackets after the full term. Abbreviations made in the abstract and in the text are taken into consideration separately. Abbreviations of the full terms stated in the abstract must be re-abbreviated after the same full term in the text.

Original Articles should be no longer than 3500 words and include no more than 6 tables and 7 or a total of 15 figures and 40 references. The abstract word limit must be 250.

**Introduction**

The article should begin with a brief introduction stating why the study was undertaken within the context of previous reports.

**Materials and Methods**

These should be described and referenced in sufficient detail for other investigators to repeat the work. Ethical consent should be included, as stated above.

The name of the ethical committee, approval number should be stated. At the same time, the Ethics Committee Approval Form should be uploaded with the article.

**Results**

The Results section should briefly present the experimental data in text, tables, and/or figures. Do not compare your observations with that of others in the results section.

**Discussion**

The Discussion should focus on the interpretation and significance of the findings with concise and objective comments that describe their relation to other work in that area and contain study limitations.

**Study Limitations**

Limitations of the study should be detailed. In addition, an evaluation of the implications of the obtained findings/results for future research should be outlined.

**Conclusion**

The conclusion of the study should be highlighted.

**e. References**

The reference list should be typed on a separate page at the end of the manuscript. Both in-text citations and references must be prepared according to the Vancouver style. Accuracy of reference data is the author's responsibility. While citing publications, preference should be given to the latest, most up-to-date references. The DOI number should be provided for citation of ahead-of-print publication, Journal titles should be abbreviated in accordance with the journal abbreviations in Index Medicus/MEDLINE/PubMed. All authors should be listed in the presence of six or fewer authors. If there are seven or more authors, the first three authors should be listed, followed by "et al." References should be cited in text, tables, and figures should be cited as open source (,,4) in parenthesis numbers in parentheses. References should be numbered consecutively according to the order in which they first appear in the text. The reference styles for different types of publications are presented as follows:

## i) Standard Journal Article

Salminen P, Paajanen H, Rautio T, et al. Antibiotic therapy vs appendectomy for treatment of uncomplicated acute appendicitis: the APPAC randomized clinical trial. JAMA 2015;313:2340-2348.8.

## ii) Book

Getzen TE. Health economics: fundamentals of funds. New York: John Wiley & Sons; 1997.

## iii) Chapter of a Book

Volpe JJ: Intracranial hemorrhage; in Volpe JJ (ed): Neurology of the Newborn, ed 5. Philadelphia, Saunders, 2008, pp 481-588.

Porter RJ, Meldrum BS. Antiepileptic drugs. In: Katzung BG, editor. Basic and clinical pharmacology. 6th ed. Norwalk, CN: Appleton and Lange; 1995. p. 361-380.

If more than one editor: editors.

iv) Conference Papers: Bengtsson S, Solheim BG. Enforcement of data protection, privacy and security in medical informatics. In: Lun KC, Degoulet P, Piemme TE, Reinhoff O, editors. MEDINFO 92. Proceedings of the 7th World Congress on Medical Informatics; 1992 Sep 6-10; Geneva, Switzerland: North-Holland; 1992. p. 1561-1565.

v) Journal on the Internet: Morse SS. Factors in the emergence of infectious disease. Emerg Infect Dis [serial online] 1995 1(1):[24 screens]. Available from: URL: <http://www.cdc.gov/ncidoc/EID/eid.htm>. Accessed December 25, 1999.

vi) Thesis: Kaplan SI. Post-hospital home health care: the elderly access and utilization (thesis). St. Louis (MO): Washington Univ; 1995.

**f. Tables, Graphics, Figures, Pictures, Video:**

All tables, graphics or figures should be numbered consecutively according to their place in the text and a brief descriptive caption should be given. Abbreviations used should be explained further in the figure's legend. The text of tables especially should be easily understandable and should not repeat the data of the main text. Illustrations already published are acceptable if supplied by permission of the authors for publication. Figures should be done professionally, and no grey colors should be used. Authors are responsible for obtaining permission to publish any figures or illustrations that are protected by copyright, including figures published elsewhere and pictures taken by professional photographers. The journal cannot publish images downloaded from the Internet without appropriate permission.

Figures or illustrations should be uploaded separately.

**Special Sections****Reviews**

Reviews will be prepared by authors who have extensive knowledge on a particular field and whose scientific background has been translated into a high volume of publications with a high citation potential are welcomed. These authors and subjects will be invited by the journal. All reviews within the scope of the journal will be taken into consideration by the editors; also, the editors may solicit a review related to the scope of the journal from any specialist and experienced authority in the field.

The entire text should not exceed 25 pages (A4, formatted as specified above).

Reviews should be no longer than 5000 words and include no more than 6 tables and 10 or a total of 20 figures and 80 references. The abstract word limit must be 250.

**Case Reports**

Case reports should present important and rare clinical experiences. It must provide novel and/or rare clinical data or new insights to the literature. Case reports should consist of an unstructured abstract (maximum 150 words) that summarizes the case. They should consist of the following parts: introduction, case report, discussion. Informed consent or signed releases from the patient or legal representative should be obtained and stated in the manuscript.

Reviews should be no longer than 1000 words and include no more than 200 tables and 10 or a total of 20 figures and 15 references. The abstract word limit must be 150.

**Clinical Images**

The journal publishes original, interesting, and high quality clinical images having a brief explanation (maximum 500 words excluding references but including figure legends) and of educational significance. It can be signed by no more than 5 authors and can have no more than 5 references and 1 figure or table. Any information that might identify the patient or hospital, including the date, should be removed from the image. An abstract is not

required with this type of manuscripts. The main text of clinical images should be structured with the following subheadings: Case, and References.

**Video Article**

Video articles should include a brief introduction on case, surgery technique or a content of the video material. The main text should not exceed 500 words. References are welcomed and should not be more than 5. Along with the main document, video material and 3 images should be uploaded during submission. Video format must be mp4 and its size should not exceed 100 MB and be up to 10 minutes. Author should select 3 images, as highlights of the video, and provide them with appropriate explanations. Video and images must be cited within main text.

**Technical reports**

Technical reports are formal reports designed to convey technical information in a clear and easily accessible format. A technical report should describe the process, progress, or results of technical or scientific research or the state of a technical or scientific research problem. It might also include recommendations and conclusions of the research. Technical reports must include the following sections: abstract, introduction, technical report, discussion, conclusions, references. Technical reports should contain less than 20 references.

**Diagnostic puzzle**

Diagnostic puzzles report unusual cases that make an educational point. Since the aim of these articles is to stimulate the reader to think about the case, the title should be ambiguous and not give away the final diagnosis immediately. Diagnostic puzzles should include an introduction and answer part. The introduction part should include a brief clinical introduction to a case (maximum 250 words) followed by an image and a question designed to stimulate the reader to think about what the image shows. The legend should not indicate the diagnosis but should simply describe the nature of the image. Then, the answer part should appear later (maximum 250 words) outlines a brief description of the key diagnostic features of the image, the outcome, and a teaching point.

Diagnostic puzzles will not include more than 5 references. The quality of the image must be at least 300dpi and in TIFF, JPEG, GIF or EPS format. Videos are also welcome and should be in .mov, .avi, or .mpeg format.

**Novel insight**

This section will offer an opportunity for articles instead of the traditional category of Case Reports. Submissions to this section should contribute significant new insights into syndromological problems, molecular approach and real novelties on recognized or entirely new genetic syndromes or a new technique. The novel aspect(s) can be in the phenotype and/or genotype, the presentation, and the investigation. Submissions can be based around a single case or serial cases. Manuscripts for this section will go through the usual peer reviewing process. The manuscripts should contain abstract (maximum 150 words), a brief introduction, case report(s) and discussion.

## Instructions to Authors

**Letters to the Editor**

This section welcomes manuscripts that discuss important parts, overlooked aspects, or lacking parts of a previously published article in this journal. In addition, articles on subjects within the scope of the journal that might have an attraction including educative cases, may also be submitted in the form of a "Letter to the Editor." The manuscripts for this section should be written in an unstructured text including references. The editor may request responses to the letters. There are no separate sections in the text.

Letter to the editors should be no longer than 500 words.

**Revision Process**

During the submission of the revised version of a manuscript, the authors should submit a detailed "Response to the reviewers and editors" that

states point by point how each issue raised by the reviewers and/or editors has been replied to and where it can be found (each reviewer's comment, followed by the author's reply and line numbers where the changes have been made) as well as an annotated copy of the main document. Revised manuscripts should be submitted within 30 days from the date of the decision letter. If the revised version of the manuscript is not submitted within the allocated time, the revision option may be cancelled.

Accepted manuscripts are copy-edited for grammar, punctuation, and format. Once the publication process of a manuscript is completed, it is published online on the journal's webpage as an ahead-of-print publication before it is included in its scheduled issue.

LIMITATION TABLE					
Type of Manuscript	Word Limit	Abstract Word Limit	Reference Limit	Table Limit	Figure Limit
Original Article	3500	250 (Structured)	40	6	7 or total of 15 images
Review	5000	250	60	6	10 or total of 20 images
Case Report	1000	150	20	200	10 or total of 20 images
Letter to the Editor	500	No Abstract		No tables	No media
Video Article	500		5		
Diagnostic Puzzle	250 (as a brief clinical introduction)		5		
Clinical Images	500 (as a brief explanation)		5	1	1
Technical Reports			20		

## REVIEW

- P82** **Expanded Disability Status Scale (EDSS) in Multiple Sclerosis**  
Serkan Demir

## ORIGINAL ARTICLES

- P90** **Maternal and Neonatal Outcomes of Pregnant Women with COVID-19 in İstanbul, Turkey: A Single-center, Descriptive Study**  
İbrahim Polat, Merve Aldıkaçtıoğlu Talmaç, Pınar Yalçın Bahat, Ayşegül Bestel, Aysu Akça, Ozan Karadeniz, Seda Yılmaz Semerci, Merih Çetinkaya
- P97** **Are We Missing West Nile Virus in Turkish Blood Donors?**  
Kamuran Ziyaretli Şanlı, Nesrin Gareayaghi, Nurgül Ceran
- P103** **Comparison of Umbilical Cord and Postnatal Fourth Month Serum 25-OH Vitamin D Levels of Late Preterm and Term Infants**  
Dilek Yavuzcan Öztürk, Seçil Erçin, Ayşem Kaya, Güner Karatekin
- P110** **The Risk Factors for SARS-CoV-2 Transmission in Healthcare Workers of Secondary Level Intensive Care Units**  
Ayşe Bahadır, Sibel Yurt, Hatice Sözen Örenç, Cihan Aydın, Gül Ünalın

## TECHNICAL REPORT

- P115** **Nikaidoh Procedure for a Beating Heart: A Technical Note**  
Berra Zümrüt Tan Recep, Ali Can Hatemi

## INDEX

- 2022 Referee Index  
2022 Author Index  
2022 Subject Index